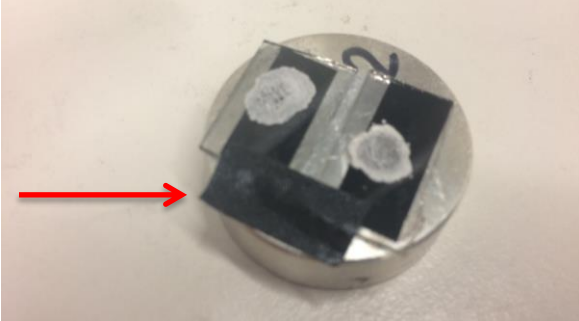


Manual Cressington 208 HR for SEM coating

The Cressington coater can be used to apply a conductive coating of Au-Pd on SEM samples mounted on a 32 mm round SEM stub.

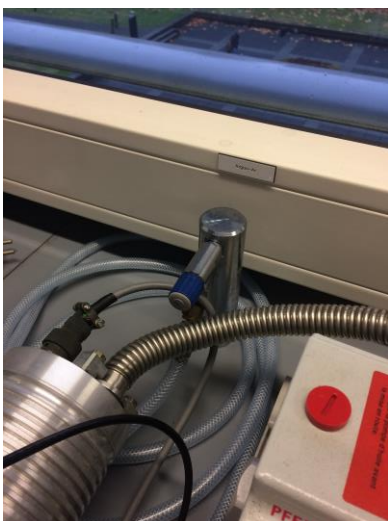
Put a strip of tape between stub and sample and on top of the sample (arrow) to create a conductive bridge.



- 1) Open the cover carefully (split the 2 aluminum rings)



- 2) Put the sample on the sample table (there are 4 positions).
- 3) Close the cover (watch closely that the aluminum rings are well aligned).
- 4) Open the "Argon valve" (blue valve behind the coater).



- 5) Switch on the coater (1).
- 6) Wait until the turbo pump indicates ready (2).
- 7) Press button (3) to switch from "Auto" to "Manual".
- 8) Check if the settings are ok (10): press first (4) to check whether the current (10) indicates 40mA. You can change the settings by pressing (4) and the arrows (5) simultaneously. Next, you can check the time (10): the standard duration is 20 seconds, but you can change the time by pressing (6) and the arrows (5) simultaneously.
- 9) Press "Button flush". Do this for 5 seconds and switch the flush off (7)
- 10) Wait until the turbo pump indicates ready (2).
- 11) Press "Button leak" (8)
- 12) Press "Button start/stop" (9)
- 13) The system now automatically starts the coating, You can see a purple light in the sample chamber. This stops automatically when the 20 seconds are done.
- 14) Switch off the coater (1) and wait until the chamber is vented.
- 15) Open the cover carefully (split again the 2 aluminum rings).
- 16) Take your sample out.
- 17) Close the cover.
- 18) Close the Argon valve.

